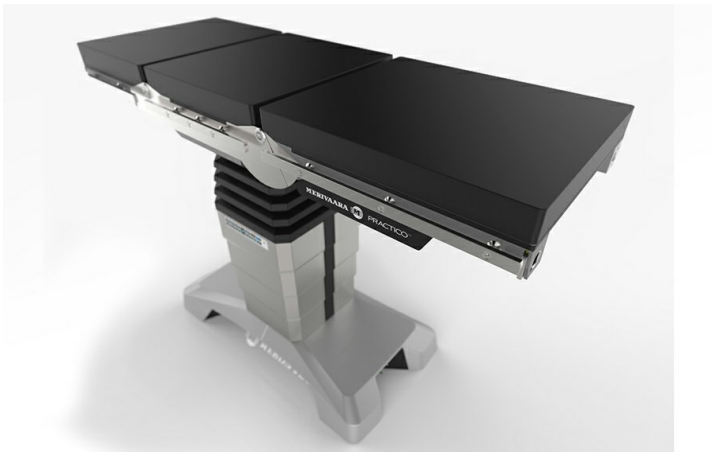


NEW, SMARTER PRACTICO OPERATING TABLE

The versatile operating table Practico has been designed to improve ergonomics with the industry's widest range of posture possibilities. It is powered by smart controls that help you work more fluently.





Lifting column

- High version: 640–1130 mm
 - Low version: 540–1030 mm
 - General version: 585–885 mm
- Dimensions are for slide version. Non-slide version is appr. 10 mm higher.

Seat section

- With or without slide
- With or without motorized leg section joints

Head sections

Standard head sections for standard and kidney-bridge back sections

Optional head sections for beach-chair and eye-ENT back sections

Back section models

- Standard
- Kidney bridge
- Eye-ENT
- Beach chair

Leg sections

- Gas spring assisted divided leg sections length 680 mm
- Gas spring assisted leg section, length 645 mm
- Gas spring assisted divided leg section, length 880 mm
- 25- and 40-sections
- 25-gynaecologic section
- Divided leg sections, 4 section incl. solid pelvic plate, length 865 mm
- Divided leg section double joint short, length 680 mm
- Light leg sections for motorized and non-motorized legs
- Light foot rest

Surgical table Practico is designed and manufactured in Finland.

Title	Practico General height, slide		Practico Max Hi height, slide		Practico Max Lo Height, slide	
	540 mm	21.26 in	540 mm	21.26 in	540 mm	21.26 in
Width (table top)						
Height adjustment	585 - 885 mm	23 - 34.8 in	640 - 1130 mm	25.2 - 44.5 in	540 - 1030 mm	21.3 - 40.6 in
Safe working load (SWL)	280 kg	617.3 lb	280 kg	617.3 lb	280 kg	617.30 lb
Trendelenburg	30 °		30 °		30 °	
Reverse Trendelenburg	30 °		30 °		30 °	
Back section adjustment	-40 - 70 °		-40 - 70 °		-40 - 70 °	
Mattress base (sections, pcs)	4-6		4-6		4-6	
Longitudinal shift of the table top	390 mm	15.4 in	390 mm	15.4 in	390 mm	15.4 in
Lateral tilt	-20 - 20 °		-20 - 20 °		-20 - 20 °	
Max. lifting capacity	400 kg	882 lb	400 kg	882 lb	400 kg	882 lb
Is Lojer Product	0		0		0	
Product Code	145000		145000		145000	